



# Training Catalog

## Supply App Training Catalog

This Training Catalog offers example training flows tailored to each user type, along with additional workshops, refresher sessions, and topic-specific training options.

- Training flows are scheduled as cohesive units
- Workshops and refresher sessions may be attended independently on a per-session basis

An example agenda is available upon request.  
For any customization needs, please reach out to your  
N-SIDE point of contact.

**Looking forward to hearing from you soon!**

VOICES OF SUCCESS  
**Client Testimonials**

*"The trainers demonstrated deep knowledge of the system and trials and tuned the training to specific needs. Very effective."*

**Oncology workshop,**  
on site.

*"I very much appreciated the hands on exercises, the small class size & slower pace and the interactions with the trainers. It was very helpful getting the slides to review before the training. I liked the "IRT game", it was a fun and different way of learning. I also liked having time to just brainstorm and discuss scenarios. The trainers were AMAZING, so knowledgeable, helpful and patient!! I am looking forward to another workshop, hopefully soon!"*

**Oncology workshop/ IRT game,**  
on site.

*"Really informative, interactive training tailored to individual needs. Both trainers were very knowledgeable and took the time to explain things and revisit anything that was not clear."*

**Power User Journey,**  
remote.

*"The comprehensive and hands-on examples were very useful and allowed for real time application of the theoretical concepts we discussed in each session. Being able to apply the concepts and actually develop a trial, analyze the results and manipulate the assumptions to see the impact on the trial was very helpful and accelerated the learning process. I feel ready to jump right in."*

*The trainers were also great! Each individual brought a different perspective and skill set to the training which was helpful in learning the tool. They also brought real world examples for my company specifically and other trials they are working on which was great."*

**Power User Journey,**  
remote.

*"I consider both of them to be very professional trainers who can engage the trainees and explain complex topics in an entertaining way. I liked very much the co-moderation style. Top!"*

**Power User Journey,**  
remote.

# Table of Contents

Page

## **Visual User Journey** 4-6 hours (suggestion: split into 2 sessions)

Introduction	6
Mathematical Concepts	6
Introduction to the Dashboards	6
Service Desk	6
Quiz	6

## **Advanced User Journey** 24-28 hours (suggestion: split into 6 sessions)

Introduction	7
Mathematical Concepts	7
Introduction to the Dashboards	7
Advanced User Exercise – A Reevaluation	7
Site Resupply Optimization	8
Service Desk	8
Quizzes	8

## **Power User Journey** 36-40 hours (suggestion: split into 10 sessions)

Introduction	9
Mathematical Concepts	9
Introduction to the Dashboards	9
Power User Exercise – Create a Trial	9
Power User Exercise – A Reevaluation	10
IRT Training	10
Site Resupply Optimization	10
Service Desk	10
Quizzes	10

## **Workshops**

Dashboard Quiz Workshop	
IRT Game (needs to be in person)	
Oncology Workshop (Marketed Products/Comparator sourcing)	
Oncology Workshop Part I (Dropout specificities)	
Oncology Workshop Part II (Early Oncology/Dose escalation)	
Oncology Workshop Part III (Platforms studies)	
Overage Workshop	
Risk Workshop – Basic	
Risk Workshop – Advanced	
Showcasing Impact Workshop	
Trial Design Workshop	

Visual user	Advanced user	Power user	Page
✓	✓	✓	11
✓	✓	✓	11
✓	✓	✓	11
✓	✓	✓	11
✓	✓	✓	12
✓	✓	✓	12
×	×	✓	12
✓	✓	✓	12
×	✓	✓	12
×	×	✓	12
✓	✓	✓	12
×	×	✓	12

## Extra Trainings

Assumption Report Training  
Depot Shipment Refresher  
Global Performance Dashboard  
Process Training  
Reevaluation Refresher  
Technical Review Training

Visual user	Advanced user	Power user	Page
✓	✓	✓	13
✗	✓	✓	13
✓	✓	✓	13
✓	✓	✓	13
✗	✓	✓	13
✗	✓	✓	13

# Visual User Journey

This Training Flow is specifically designed for study managers that are focused on monitoring the actuals vs the simulation results of their clinical trials.



This training caters to Visual Users in the Supply App.

We recommend up to 10 Users per training session to ensure optimal interactivity.

## Introduction to the Supply App

Introduction to N-SIDE & the role of a Visual User.

 Duration: 0.25 hours  Teaching Format: Theory  User Track: Visual

## Mathematical Concepts

Providing insights into the algorithm & simulations.

 Duration: 0.25 hours  Teaching Format: Theory  User Track: Visual

## Introduction to the Dashboards

Providing Users with a working understanding of:

- Results Dashboard
- Comparison Dashboard
- Monitoring Dashboard

 Duration: 3 hours  Teaching Format: Practice  User Track: Visual

## Service Desk

Guiding users on how to submit tickets for the tool.

 Duration: 0.25 hours  Teaching Format: Practice  User Track: Visual

## Quiz

A quiz at the end of the training to reinforce and solidify knowledge.

 Duration: 1 hours  Teaching Format: Practice  User Track: Visual

## Advanced User Journey

This Training Flow is specifically designed for study managers with tailored editing privileges, enabling them to reevaluate studies in the Supply App.



This training caters to Advanced Users in the Supply App.

We recommend up to 5 Users per training session to ensure optimal interactivity.

### Introduction

Introduction to N-SIDE & the role of an Advanced User.

⌚ Duration: 0.5 hours    ⚙️ Teaching Format: Theory    👤 User Track: Advanced

### Mathematical Concepts

Providing insights into the algorithm & simulations.

⌚ Duration: 0.5 hours    ⚙️ Teaching Format: Theory    👤 User Track: Advanced

### Introduction to the Dashboards

Providing Users with a working understanding of:

- Results Dashboard
- Comparison Dashboard
- Monitoring Dashboard

⌚ Duration: 3 hours    ⚙️ Teaching Format: Practice    👤 User Track: Advanced

### Advanced User Exercise – A Reevaluation

Performing a reevaluation:

- Data Update
- IRT extract & Matching
- Reevaluation
- *Site Resupply Optimization\**
- Depot Shipments

⌚ Duration: 12-16 hours    ⚙️ Teaching Format: Theory/Practice    👤 User Track: Advanced

## Site Resupply Optimization\*

Understanding specificities of the IRT setup, learning how to set and update buffers and how to adjust IRT values.

 Duration: 4 hours  Teaching Format: Theory/Practice  User Track: Advanced

---

## Service Desk

Guiding users on how to submit tickets for the tool.

 Duration: 0.5 hours  Teaching Format: Practice  User Track: Advanced

---

## Quizzes

Multiple quizzes strategically placed throughout the trial to reinforce and solidify knowledge.

 Duration: 1-2 hours  Teaching Format: Practice  User Track: Advanced

---

*\*Optional: Depending on whether Advanced Users are taking care of site resupply updates.*



## Power User Journey

This Training Flow is specifically designed for study managers with full editing privileges, enabling them to create and reevaluate studies in the Supply App.



This training caters to Power Users in the Supply App.

We recommend up to 3 Users per training session to ensure optimal interactivity.

### Introduction

Introduction to N-SIDE & the role of a Power User.

 Duration: 0.5 hours  Teaching Format: Theory  User Track: Power

---

### Mathematical Concepts

Providing insights into the algorithm & simulations.

 Duration: 0.5 hours  Teaching Format: Theory  User Track: Power

---

### Introduction to the Dashboards

Providing Users with a working understanding of:

- Results Dashboard
- Comparison Dashboard
- Monitoring Dashboard

 Duration: 3 hours  Teaching Format: Practice  User Track: Power

---

### Power User Exercise – Create a Trial

Gain a fundamental understanding of each set-up and enter a trial in the Supply App from scratch.

 Duration: 12-16 hours  Teaching Format: Theory/Practice  User Track: Power

---

## Power User Exercise – A Reevaluation

Going through a reevaluation:

- Setups update
- IRT extract & Matching
- Reevaluation
- Site Resupply Optimization
- Depot Shipments

 Duration: 8–12 hours     Teaching Format: Theory/Practice     User Track: Power

---

## IRT Training

Get to know the main concepts of an IRT system, how it is working and how it impacts the supply chain.

 Duration: 3 hours     Teaching Format: Practice     User Track: Power

---

## Site Resupply Optimization

Understanding specificities of the IRT setup, learning how to set/optimize and update buffers and how to adjust IRT values.

 Duration: 4 hours     Teaching Format: Theory/Practice     User Track: Power

---

## Service Desk

Guiding users on how to submit tickets for the tool.

 Duration: 0.5 hours     Teaching Format: Practice     User Track: Power

---

## Quizzes

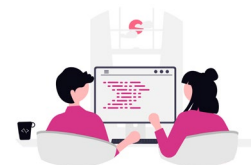
Multiple quizzes strategically placed throughout the trial to reinforce and solidify knowledge.

 Duration: 2 hours     Teaching Format: Practice     User Track: Power

---

## Workshops

All workshops combine explanatory theory with a strong emphasis on practical application and active participant engagement. The user type indication specifies which user group will benefit most from the workshop.



The duration may vary significantly based on participant engagement and the amount of participants.

### Dashboard Quiz Workshop

A quiz-based fun way to dive into the N-SIDE Dashboards (Results, Monitoring and Comparison Dashboards).



Duration: 2 hours



User Track: Visual, Advanced, Power

### IRT Game

#### (needs to be in person)

Develop a deeper understanding of how an IRT resupplies sites through an engaging, fully hands-on simulation game.



Duration: 3 hours



User Track: Visual, Advanced, Power

### Oncology Workshop

#### (Marketed Products/Comparator sourcing)

Evaluating of the impact of various comparator sourcing strategies.  
This workshop can be given independently of the other oncology workshops.



Duration: 2 hours (VU), 3 hours (AU-PU)



User Track: Visual, Advanced, Power

### Oncology Workshop Part I (Dropout specificities)

Understanding the impact of the different dropout curve shapes & parameters (such as maximum, average and median cycles).

*The N-SIDE drop-out template is available upon request for an additional fee.*



Duration: 2 hours (VU), 4 hours (AU-PU)



User Track: Visual, Advanced, Power

## Oncology Workshop Part II (Early Oncology/Dose escalation)

Gaining knowledge on the variability and impact of the assumptions in early oncology (recruitment, dropout & RP2D).

 Duration: 2 hours (VU), 5 hours (AU-PU)  User Track: Visual, Advanced, Power

---

## Oncology Workshop Part III (Platforms studies)

Understanding how to adapt a model when the new protocol includes updates on treatment & network.

 Duration: 4-6 hours  User Track: Power

---

## Overage Workshop

Identifying and understanding drivers of overage.\*

 Duration: 4 hours  User Track: Visual, Advanced, Power

---

## Risk Workshop – Basic

Gaining an understanding and identifying fundamental risk patterns within the Suite, and learning effective strategies for risk mitigation.\*

 Duration: 4-6 hours  User Track: Advanced, Power

---

## Risk Workshop – Advanced

Delving into the impact of risk, mastering the identification of advanced risk patterns, and developing effective strategies for mitigation.\*

 Duration: 4-6 hours  User Track: Power

---

## Showcasing Impact Workshop

This training focuses on showcasing the impact of simulations and convincing others. Focusing on the objective, the message, and the audience targeted, it will help identify how to communicate the right message with the right visuals to further leverage the added value of the results.

 Duration: 2-4 hours  User Track: Visual, Advanced, Power

---

## Trial Design Workshop

Enhancing clinical trial efficiency by involving Clinical Trial Supply (CTS) in design processes: learning how to optimize supply chain from start, gather and use data efficiently, and identify inefficiencies through protocol auditing.

 Duration: 6-8 hours  User Track: Power

---

## Extra Trainings

Additional training sessions for in-depth exploration or refreshers.



### Assumption Report Training

Explore the significance of the Assumptions Report and gain insights into completing it accurately and efficiently.



Duration: 1.5 hours



User Track: Visual, Advanced, Power

### Depot Shipment Refresher

Learn how to manage depot shipments with the N-SIDE Supply App.



Duration: 4 hours



User Track: Power

### Global Performance Dashboard Training

Understanding the usage of the GPD and how it can benefit both portfolio and trial evolution over time.



Duration: 2 hours



User Track: Visual, Advanced, Power

### Process Training

Learn how to properly hand over trials to ensure best collaboration between you and N-SIDE.



Duration: 3 hours



User Track: Visual, Advanced, Power

### Reevaluation Refresher

Discover how to effectively leverage IRT data in simulations to enhance clinical forecasts and understand its impact on outcomes.



Duration: 3 hours



User Track: Advanced, Power

### Technical Review Training

Provide users with the skills necessary to review their trials and make sure results are correct & optimal.



Duration: 2 hours



User Track: Advanced, Power



## **Any questions? Please contact**

### **EU**

Linda Holler  
[lho@n-side.com](mailto:lho@n-side.com)

### **US**

Arianna Noggle  
[ano@n-side.com](mailto:ano@n-side.com)

### **N-SIDE HUB**

Courbevoie 13  
1348 Louvain-la-Neuve,  
Belgium

### **USA | Cambridge**

N-SIDE LLC – MAIN OFFICE  
245 Main Street, 4th Floor  
Cambridge, MA 02142